



Mercedes College

P R E S E N T S

# CHICAGO

HIGH SCHOOL EDITION



28 - 30 JULY ★ REGAL THEATRE SUBIACO



# CHICAGO

## HIGH SCHOOL EDITION



**Book by Fred Ebb & Bob Fosse**

**Music by John Kander**

**Lyrics by Fred Ebb**

**Based on the play by Maurine Dallas Watkins**

**Script adaptation by David Thompson**

**Music editing by Paul McKibbins**

**BY ARRANGEMENT WITH ORIGIN THEATRICAL  
ON BEHALF OF SAMUEL FRENCH, A Concord Theatricals Company**





# PRINCIPAL'S WELCOME

We are very excited to welcome you to our production of Chicago: High School Edition!

As an all-girls' school, we seek to perform musicals that have a strong message for women. Chicago: High School Edition is about women standing up for themselves in their relationships, and sticking together as women.

It is also about how the media manipulate the truth to the point that the truth of the situation is lost in the sensationalism of telling the story.

Even today, people are famous for no reason – look at the Kardashians. The media exaggerate the happenings in their lives and feed it to us, the public. We accept it as truth and are manipulated to see them as famous.

This musical's message is that we need to be highly aware of how the media tells a story and not believe everything that is reported and save fame for those who make a difference in our world, not celebrities who are famous for being famous. The power of social media in influencing how we think and what we think we know is very real and the reminder of this is a great message for all of us.

Mercedes College is proud to be one of only a few schools who perform publicly at external venues, and we believe this real-world experience is invaluable to students' learning about the Arts. Working with a professional crew in a professional venue is such a fantastic opportunity!

This production would not have been possible without the incredible support of so many people. We thank everyone who has been involved in bringing this production to life, in particular our Arts staff. We are also grateful to our students' families who have been unwavering in their support.

I am delighted to present our production of Chicago: High School Edition and I hope you enjoy the performance!

**Mrs Kerrie Fraser**

Mercedes College Principal





# FROM THE CREATIVES

The musical Chicago is based on a 1926 straight play of the same name written by reporter-turned-playwright, Maurine Dallas Watkins. As a journalist for the Chicago Tribune, Watkins had a front row seat to the hotbed of crime that was Prohibition-era Chicago.

In the spring of 1924, Watkins covered the trials of accused murderers Beulah Annan and Belva Gaertner, on whom the characters Roxie Hart and Velma Kelly are respectively based. Watkins found herself shocked by the infatuation of the public and press with these accused murderers, soon dubbed “the prettiest murderess,” and “most stylish woman on Murderer’s Row.” Annan and Gaertner dominated the newspaper headlines and amassed quite a fan base, revelling in the attention and their newfound fame. While they received flowers and marriage proposals from fans, more women accused of crimes poured into Cook County jail hoping for their turn in the spotlight – it was a social contagion of sorts. By the time the two women were tried for their crimes, the public’s perception had been wholly manipulated. Both were acquitted by June of the same year.

The original production of Chicago opened on Broadway nearly half a century later, in 1975; the seventh in a long line of collaborations between composer John Kander and lyricist Fred Ebb. The legendary Bob Fosse approached the pair with the idea of turning Watkins’ play into a musical, which he then choreographed and directed. The resulting show satirised the fascination of the American public with murder and celebrity. It received mixed reviews – people expected to see a vaudeville that made them laugh and forget their cares, and instead got something that was a bit dark and cynical. Some say Chicago was perhaps ahead of its time, and audiences simply weren’t ready for it. The big hit that season was A Chorus Line, which broke all standing Broadway records at the time. Chicago couldn’t compete and closed after a run of 936 performances.

In the 1990s, there was a trend of staging revivals of shows from the past. Revivals prior to this time period focused on simply recreating a show in its old form, but creative teams in the 90s started adjusting and changing shows for revivals – taking out what didn’t work, and expanding on what did.

Chicago is a show that benefited greatly from this trend. The 1996 revival stripped everything down to a minimal set and put the band onstage. The production let the music and choreography do the storytelling. Current events of the time like the OJ Simpson trial made audiences receptive and interested in the “criminal as celebrity” themes of the show. This revival is still running on Broadway and is the longest running revival in Broadway history. It is this revival upon which our production is based.

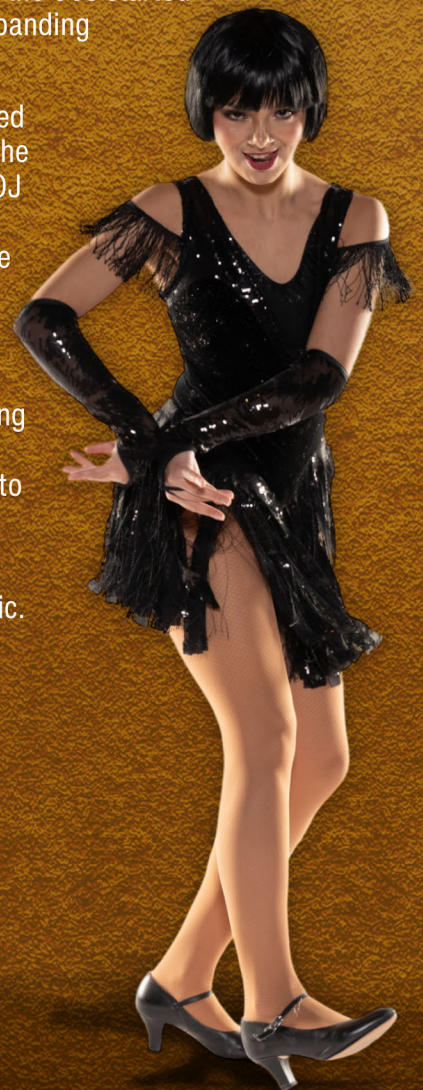
Chicago: High School Edition maintains the plot, score and Fosse styled choreography, but is specially adapted to make it more appropriate for both young and old audience members to enjoy. Set in the 1920’s and telling the stories of vaudevillians Roxie Hart and Velma Kelly, both charged with murder, it takes us to clubs, to prison and the five merry murderesses, to celebrity and ultimately freedom.

These celebrity criminals manipulate the press who, in turn, manipulate the public. It is almost impossible to find the truth in this chain. In our current world of influencers becoming celebrities and being famous for just being famous, the themes of this show have never been so resonant.

We hope you enjoy the show!

**Mrs Kathleen Cocks**

Chicago: High School Edition Director





# MUSICAL NUMBERS

## ACT 1

And All That Jazz

Funny Honey

Cell Block Tango

When You're Good to Mama

All I Care About

We Both Reached for the Gun

Roxie

I Can't Do It Alone

My Own Best Friend

Velma Kelly and Company

Roxie Hart

Velma and the Merry Murderesses

Matron "Mama" Morton

Billy Flynn

Billy, Roxie, Mary Sunshine

Roxie and Boys

Velma

Roxie, Velma and Company

## ACT 2

Me and My Baby

Mister Cellophane

When Velma Takes The Stand

Razzle Dazzle

Nowadays

Hot Honey Rag

Finale

Roxie and Company

Amos

Velma and the Girls

Billy and Company

Roxie and Velma

Orchestra

Company





## CAST

VELMA KELLY

ROXIE HART

BILLY FLYNN

AMOS HART

MATRON "MAMA" MORTON

FRED CASELY

MARY SUNSHINE

MASTER OF CEREMONIES

Stefanie Scott

Amelie Count

Thomas Matthews

Anton Coomblas

Amelia Vinciullo

Kody Fellows

Lily Walsh

Chelsea Rimington

## MERRY MURDERESSES

LIZ

ANNIE

JUNE

HUNYAK

MONA

Kealey Ward

Gabriella De Nuccio

Heidi Graves

Chloe Cormack

Aleisha Loh





# ENSEMBLE

Grace Wilson-Clark (Dance Captain)

Faith Baltov

Logann Banton

Sasha Barker

Poppy Bartlett

Madison Bourne

Hannah Boyd

Ruby Breuer

Patrick Carroll

Penelope Chinyowa

Stephanie Christodoulakis

Edyn Conroy

Eva Conroy

Siena D'Angelo

April Dillon

Cassidy Ellis

Emily Falzon

Halee Fedec

Kody Fellows

Abigail Fitzgerald

Kassandra Flexman

Sophie Fuller

Kaia Gooch

Niamh Hall

Ciara Harris

Agnes Hazelwood

Mikayla Hine

Mia Horgan

Ozzy Izzett

Zara Mascarenhas

Ella Maio

Dior Malata

Andrea Martin

Madeleine McFerran

Heidi Meyers

Ella Mutsaers

Imogen Newton

Daniel Nievelstein

Imogen Oliver

Saoirse O'Reilly

Maya Ortiz

Chloe Otness

Mackenzie Pritchard

Nooria Ranjbar

Chloe Rimington

Nikolina Sango

Finn Stenning Alexander

Amelie Sorgiovanni

Chloe Spanjich

Gabriella Taseski

Isabel Taylor

Charlee Thornett

Mackenzie Twomey

Stella Vulinovic

Imogen Wares

Isobel Williams

Indigo Whincup

Sienna Whiteley

Abigail Woodhouse

Celina Wyder





# BAND

PIANO/CONDUCTOR

SOPRANO, ALTO SAXOPHONES, CLARINET, OBOE

SOPRANO, TENOR SAXOPHONES, CLARINET, PICCOLO

BASS CLARINET AND CLARINET

TRUMPET

TROMBONE

VIOLIN

BANJO, MANDOLIN, UKELELE

PIANO

BASS

DRUMS & PERCUSSION

Mr Harry Oliff

Mrs Claire Waterhouse

Mr Brad Swope

Mr Alex Boyd

Mr Adrian Kelly

Mrs Tracey Harris

Mr Jeremy Greig

Mr Peter Chan

Miss Catherine Clarnette

Miss Anika Collins

Mr Jarrad Van Dort

Mr Jetson Cook

Mr Paul Pooley

Mr Paul Waterhouse



# CREW

## STAGE CREW

Lucie Knezovic

Annelise Lamers

Mathilda Meyers

Cailen Moskwiak

Alexia Petrillo

Anshrah Sultan

## HAIR & MAKEUP

Miss Sarah Cocks

Mrs Jo Driscoll

Stephanie Christodoulakis

Chloe Cormack

Sophie Fuller

## COSTUME CREW

Emily Neal

Vanessa Seymour

## FILM CREW

Mrs Marli van der Merwe

Mr Harry Weston

Bijou Birt

Natalie Bradley

Elizabeth Curnow

Tori Curnow

Amy Dancewicz

Simone Eweje

Domini Foss

Madison Kessell

Georgia Maguire

Ella Minnili

Vanthi Pham

Mika Richardson

Caelyn Rutter

Sarskia Squire-Welsh

Amy Tulk

Alexia Walton





# CREATIVES

DIRECTOR

MUSICAL DIRECTOR

CHOREOGRAPHER

ASSISTANT DIRECTOR

COSTUME DESIGN

VOCAL COACH

ADMIN ASSISTANT

SET DESIGN & CONSTRUCTION

TECHNICAL MANAGER

STAGE MANAGER

SOUND DESIGN & OPERATOR

SOUND ASSISTANT

LIGHTING DESIGN & OPERATOR

PHOTOGRAPHY

Kathleen Cocks

Harry Oliff

Shael Sutherland

Emily Hunt

Jo Driscoll

Sarah Cocks

Alison Armstrong

Performing Arts Link

Matthew Aris

Alexander Kiely

Michael Fletcher

Clara Evans

Max Mackenzie

Mark Flower

Cassidi Young

## THE REGAL THEATRE

TECHNICAL MANAGER

ASST TECH MANAGER/HEAD MECHANIST

HEAD FLYMAN

DEP MECHANIST

HEAD OF AUDIO

HEAD OF LIGHTING

DOME #1

DOME #2

Raphael Whittingham

Tom Janes

Radek Rubinski

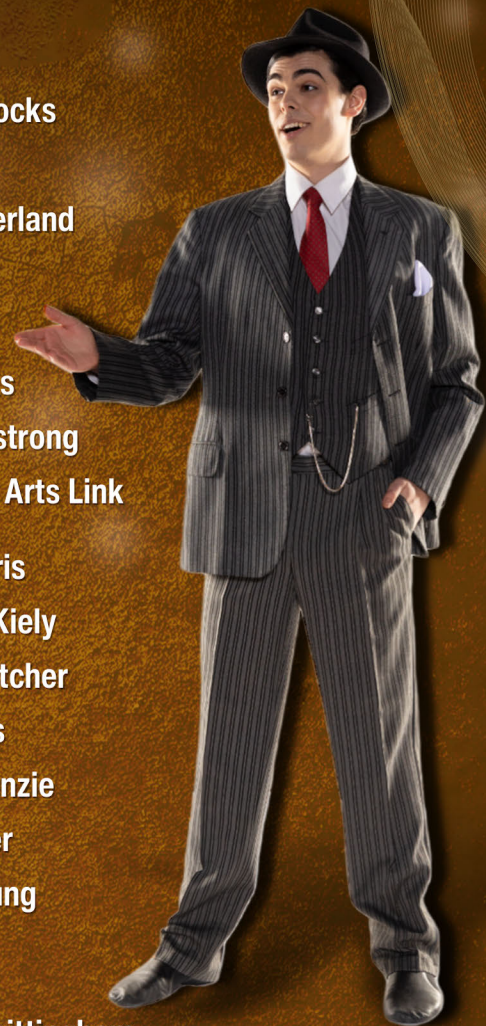
Jo Thornton

Ian Stuart

Kalib Gwylim

Geoff Chester

Alex Fetwadjeff





# ACKNOWLEDGEMENTS

## MARKETING

## IE TEACHER ASSISTANT

## PARENT & GRANDPARENT

## COSTUME HELPERS

Christian Forster

Lisa Rossi

Sally Tabram

Danielle Adams

Carmela Balla

Dianne Barker

Mackenzie Count

Ruby Driscoll

Sharryn Ellis

Gina Falzon

Amelia Graves

Margaret Kerrigan

Jemma Neal

Toni Rampant

Gina Ritchie

Milla Boros

Emily Neal

Vanessa Seymour

## STUDENT COSTUME HELPERS



## SPECIAL THANKS

Mr Rodney Njirich

Mr Travis Haddrick

Cocks Family

Driscoll Family

Hunt Family

Mr Steven Vinciullo

Mrs Danielle Wares

Year 12 Prefects

Mrs Kerrie Fraser

Mrs Bridgette Stoney

Ms Charmaine Clements

Iona Presentation College

The Regal Theatre

Mercedes College P&F

Mercedes College Alumni





# ABOUT MERCEDES COLLEGE

Mercedes College is a Catholic Year 7 to 12 school specialising in girls' education. Empowering every young woman to develop her strengths and prepare her for life beyond school, the College provides the ideal environment for our students' academic, social and emotional development in an evolving world context.

Founded by the Sisters of Mercy in 1846, Mercedes offers young women an outstanding Catholic education based on the Mercy values of compassion, justice, excellence, integrity and service. Its mix of heritage architecture and modern facilities offers students a unique learning environment in a dynamic city setting.

You will see from this performance of Chicago: High School Edition that one of the College's great strengths is The Arts. Encompassing Drama, Dance, Music, Media, Speech and Design & Visual Arts, our Arts program is second to none.

Our Arts programs are well resourced and innovative, offering varied opportunities for students to be involved in school events such as this one. Our students are highly successful in many exams, competitions, Eisteddfods and Festivals both here and overseas.

The Arts are fortunate to be able to perform this production in this professional venue, extending our students' knowledge of theatre and performance by working with theatre professionals to industry standards. This is our fifth musical production at the Regal Theatre. The experience of performing in this venue makes it a rare advantage for Mercedes College students.

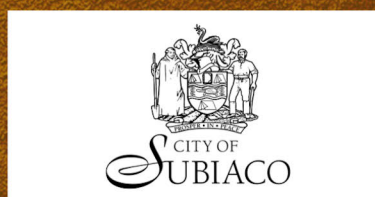
To find out more about enrolling your daughter at Mercedes College, contact our Enrolments Officer on 9323 1323, or book a tour by visiting the website at [www.mercedes.wa.edu.au](http://www.mercedes.wa.edu.au).

## THE REGAL THEATRE

The Regal Theatre is held in Trust for the people of Western Australia by the Regal Theatre Foundation Limited.

**Foundation Members:** Warren Kerr, Richard V Diggins, Victoria Holthouse, Stella Familton

**Community Partners:** Lotterywest and City of Subiaco



**REGAL THEATRE MANAGEMENT**

**INTERSTAR PTY LTD**

**474 Hay Street, Subiaco, Western Australia 6008 • Tel: (08) 9388 2066**

**Fax: (08) 9388 2860 • Email: [regal@inet.au](mailto:regal@inet.au)**

**Website: [www.regaltheatre.com.au](http://www.regaltheatre.com.au)**

**MANAGER**

**KIM KNIGHT**

**ASSISTANT MANAGER**

**BILLI KNIGHT**

**TECHNICAL MANAGER**

**RAPH WHITTINGHAM**

**CLEANERS**

**SERVICES RENDERED**

CAMERAS AND RECORDING EQUIPMENT ARE PROHIBITED IN THE THEATRE WITHOUT WRITTEN PERMISSION FROM THE MANAGEMENT. THE MANAGEMENT RESERVES THE RIGHT TO ALTER THE PROGRAM OR REPLACE ARTIST WITHOUT NOTICE. THE MANAGEMENT RESERVES THE RIGHT TO REFUSE ADMISSION TO THE THEATRE. LATECOMERS MAY ONLY BE ADMITTED AT THE DISCRETION OF THE MANAGEMENT. TICKET HOLDERS ENTER THE VENUE AT THEIR OWN RISK. THE MANAGEMENT ACCEPTS NO LIABILITY WHATSOEVER OR HOWSOEVER CAUSED FOR ANY INJURY TO PERSONS OR PROPERTY WHILE ON THE PREMISES OR WITHIN THE PRECINCTS OF THE THEATRE.







# Mercedes College

2023



CHICAGO  
HIGH SCHOOL EDITION